

THE STELLA



Plans and elevations may contain options which are not standard on all models

This 438 sq.ft. gooseneck tiny home comes complete with a fold down deck and an expansive loft bedroom with its own reading area, and that's just the start! Unlike other cramped and inefficient layouts on the market, the Stella is open concept with light and airy spaces. The living room offers a spacious area for your entertainment needs with easy access to the kitchen and a view up into the office area. Typically, owners have to compromise the open feel to get more storage, but not with the Stella! The Stella features a full height coat closet at the entry, plus a second wardrobe in the office area, and additional cabinets throughout. Up in the office area you will find access to your fold down deck. The galley kitchen layout provides a separate eat-in area with all the appliances you would expect in a kitchen. Just as we get to the bathroom you will find a washer & dryer and the stairs to the loft. The bathroom is over sized with vaulted ceilings, a 5' shower, large vanity, and of course a nice comfort height toilet. Before we go let's not forget about the loft. The bedroom offers a queen size bed with a skylight above, just amazing! To finish off, the bedroom has an adjacent area to chill on a plush pillow and enjoy your "me" time.



TYPICAL "UV" CONSTRUCTION FEATURES

- Patented #6018921 insulated floor system
- 2x4 exterior wall construction with ZIP system sheathing
- Closed cell spray foam in walls, ceilings, and floor
- Pella windows and doors
- Kohler plumbing products
- Sea-Gull LED lighting
- Custom cabinets & built-ins
- Solid surface countertops
- And more...



3123 S. Memorial Drive | Mt. Pleasant, WI 53403 | 101 Parr Avenue | Spicewood, TX 78669

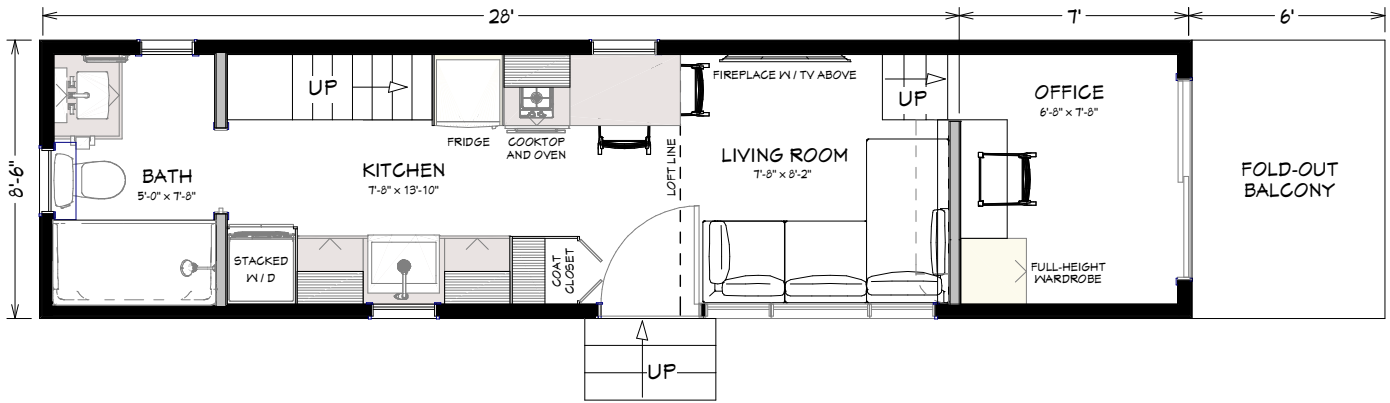
P: 414 . 762 . 0950 | F: 414 . 762 . 0955

sales@utopian-villas.com | utopian-villas.com

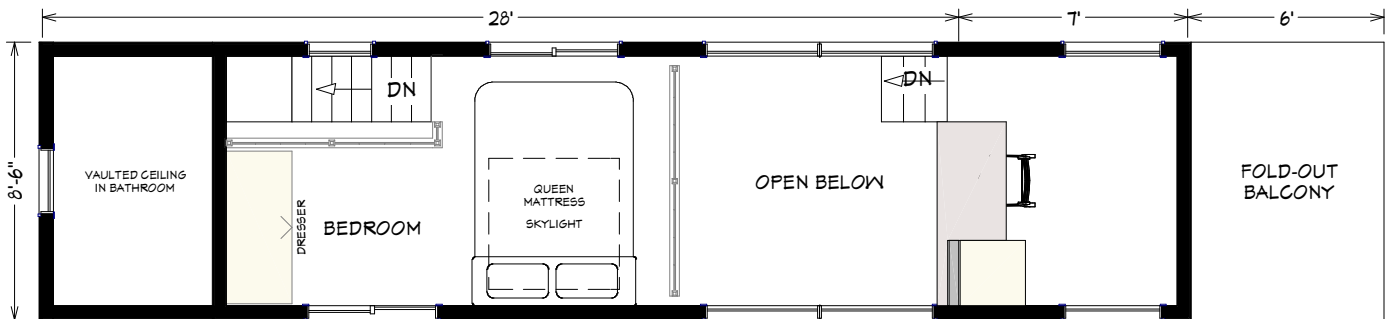


THE STELLA

FIRST FLOOR



LOFT



Utopian Villas reserves the right to make changes to the floorplans, specifications, dimensions and elevations without prior notice

3123 S. Memorial Drive | Mt. Pleasant, WI 53403 | 101 Parr Avenue | Spicewood, TX 78669

P: 414 . 762 . 0950 | F: 414 . 762 . 0955

sales@utopian-villas.com | utopian-villas.com



Rev. 4-20