

The Capitol Reef

a luxurious recreational retreat

Fun Fact
Pioneers planted fruit trees in 1880 that are still around today. The park service planted even more trees and started orchards in the park.

Modern Style

Plans and elevations may contain options which are not standard on all models

Just like the tall mountains of Capitol Reef, this tiny home stands tall with its unique design. This tiny home has many windows, a beautiful second floor balcony and a sun room with large windows, allowing you to always have a wonderful view. This model is very roomy, with lots of open spaces and extra areas for storage. Capitol Reef also has a kitchen area with lots of counter top space, making it easy to seat multiple people. If hosting isn't your thing, you can cozy up in the living room next to the warm fireplace. Don't forget about the upper deck! Whether you're soaking up the sun or soaking in the view, the upper deck is the place to be.

Unique Features

- 400 sq. ft. main floor, 225 sq. ft loft floor
- 390 sq. ft balcony, 144 sq. ft sunroom
- Rooftop balcony
- "Spa" like shower with full size bath
- Sunroom for 3 season use
- Peninsula kitchen that seats 4
- Indoor fireplace for a cozy ambiance
- First floor bedroom, 2 loft bedrooms
- Open concept kitchen and living area
- Massive upper deck space
- Staircase going up to loft
- Under stair storage
- Bedroom closet storage
- Exterior staircase to upper deck
- Dedicated washer/dryer space



Front View



Rear View



3123 S. Memorial Drive | Mt. Pleasant, WI 53403 | 101 Parr Avenue | Spicewood, TX 78669

P: 414 . 762 . 0950 | F: 414 . 762 . 0955

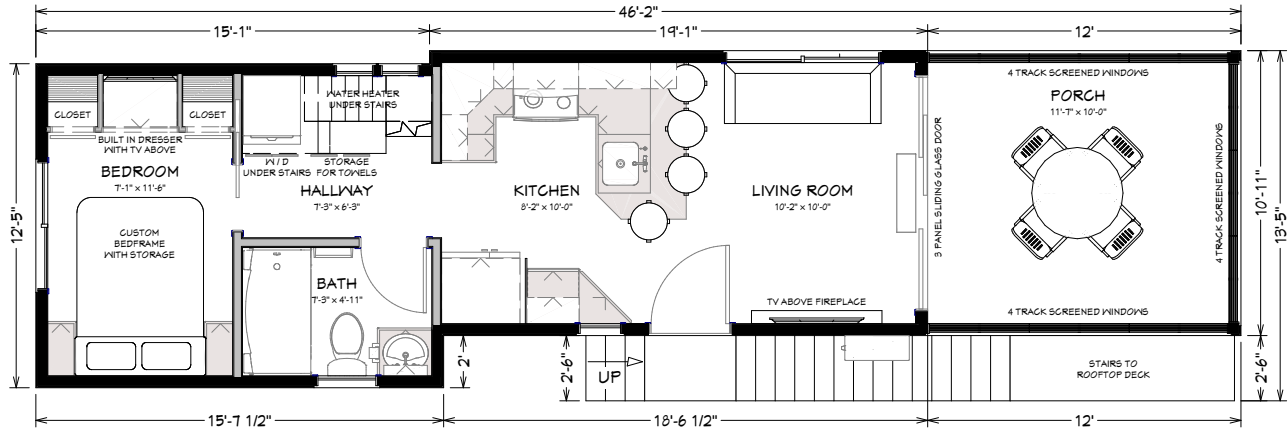
sales@utopian-villas.com | utopian-villas.com



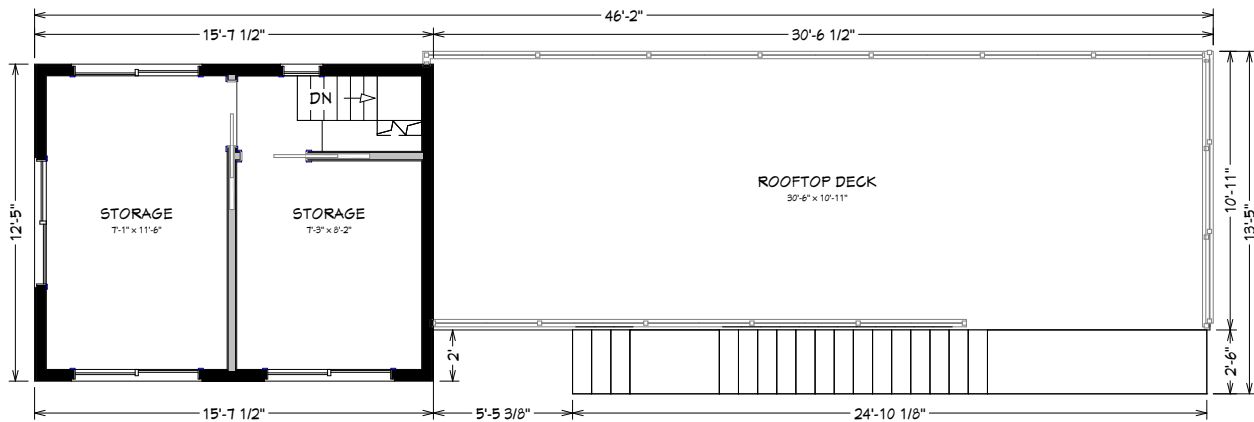
Rev. 01-22

The Capitol Reef Floor Plan

Main Floor



Loft Floor



Utopian Villas reserves the right to make changes to the floor plans, specifications, dimensions and elevations without prior notice.