

# The Castle Mountains

a luxurious recreational retreat

**Fun Fact**  
Castle Mountains National Monument is only accessible by dirt road and contains the ghost town of Hart and prehistoric rock art and archeological sites.



Modern Style

Plans and elevations may contain options which are not standard on all models

The **Castle Mountains**, named after the spires of Castle Peaks, captures that iconic look with a stone castle style and a modern style. The Castle Mountains is the presidential suite of Utopian Villas. Want to live in a 400 sq. ft. Villa, but don't want to downsize your wardrobe? The Castle Mountain's full walk-in closet is your solution. The turret is the focal point of the home, with its meticulously designed spiral staircase, circular bookcase and reading nook. Unwind in the reading nook with a good book by the gas fireplace or escape upstairs to the loft with a view. Did we mention that this home sleeps 8 guests?



Stone Castle Style

## Unique Features

- 400 sq. ft main floor, 226 sq. ft loft
- Sleeps 8 guests
- Large walk-in closet
- Turret with reading nook and bookcase
- Gas fireplace for cozy ambiance in living room and reading nook
- 12' high ceilings
- Loft bedrooms with 3 additional queen beds
- Comfortable, circulating heating and cooling
- Indoor/outdoor audio system
- Open concept
- "Spa" shower experience with a full-size bath and custom shower design
- Glass floor option connecting loft bedrooms and more...



Turret Reading Nook



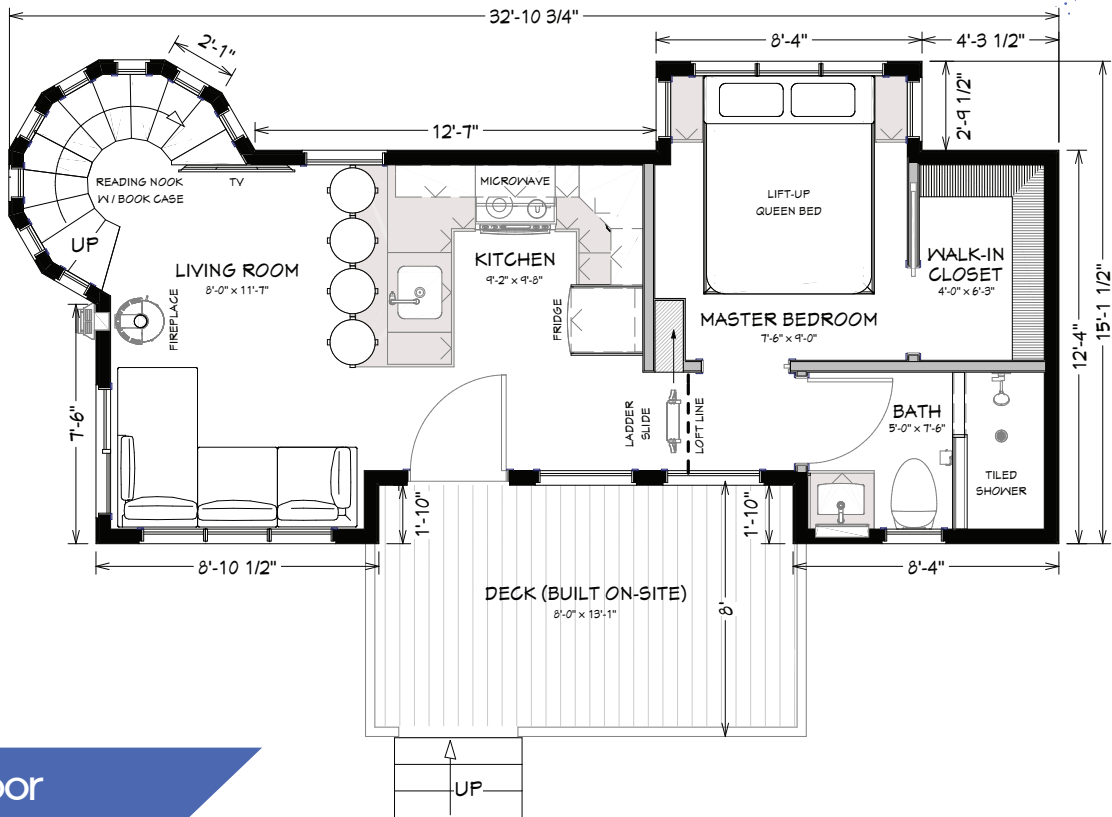
3123 S. Memorial Drive | Mt. Pleasant, WI 53403 | 101 Parr Avenue | Spicewood, TX 78669  
P: 414 . 762 . 0950 | F: 414 . 762 . 0955  
sales@utopian-villas.com | utopian-villas.com



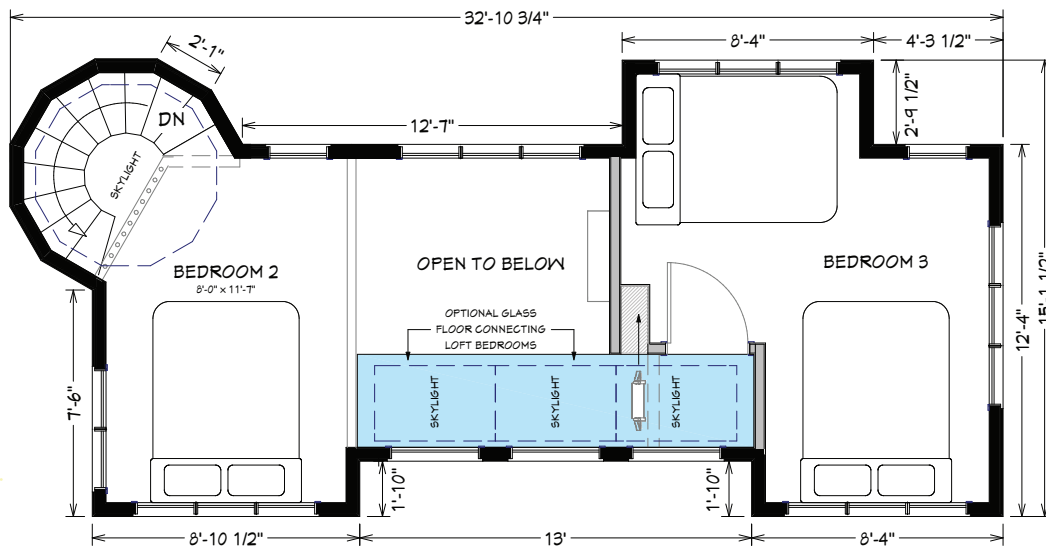
Rev. 01-22

# The Castle Mountains Floor Plan

## Main Floor



## Loft Floor



Utopian Villas reserves the right to make changes to the floor plans, specifications, dimensions and elevations without prior notice.