

The Denali

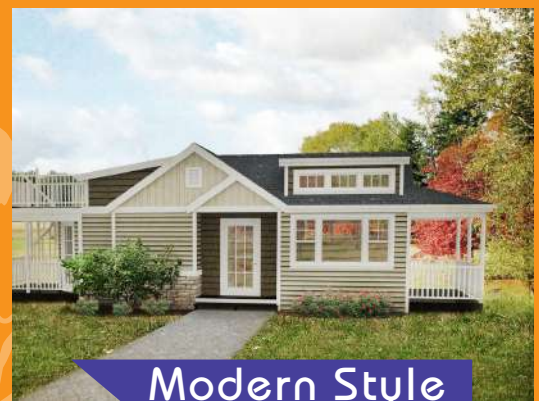
a luxurious recreational retreat

Fun Fact
Mount McKinley, located within Denali National Park and Preserve, is the highest mountain on the North American continent. The mountain's vertical relief of 18,000 feet is greater than that of Mount Everest.



Plans and elevations may contain options which are not standard on all models

The Denali (De-na-li), named after a mountainous Alaskan National Park fits this design perfectly with its edgy lines and rustic exterior. At first glance, you will notice the multiple roof lines that give the Denali a profile of a mountain range. The exterior finish blends perfectly with the outdoors by using a combination of real wood textures. The Denali also includes the porches, one of which is elevated to give that observation deck feel. All of the porches include glass railings to offer an un-obstructed view of the beautiful outdoors. As you take your first steps inside, you will notice the spacious, warm layout. The kitchen features a peninsula giving you enough seating for four, and paired with the open living room, there is enough room to entertain a crowd. As you walk past the ambient electric fireplace, you can open up the living room to one of the outdoor living spaces. The Denali features a loft design second to none with its vaulted design that leads you to the elevated observation deck with a spiral stair case. Going back down to the main floor, you notice the beautiful full size bath with shower spa giving you relaxation and tranquility after a long day. The master suite allows room for a queen size bed and has exclusive access to outdoor relaxation on one of Denali's decks. This home provides a fun, relaxing design that gives you all of the beauty of the outdoors while allowing you to enjoy the comfort of the woods!



Modern Style

Unique Features

- 400 sq.ft. loft info
- multiple roof lines
- wrapping kitchen island
- 2 lower decks
- variety of exterior textures
- access to upper deck via
- 1 upper deck
- "spa" shower experience
- spiral stairs or loft entry
- comfortable, circulating heating and cooling
- quartz countertops
- indoor/outdoor audio system
- Whirlpool appliances and more...
- ample storage in the floor



Interior



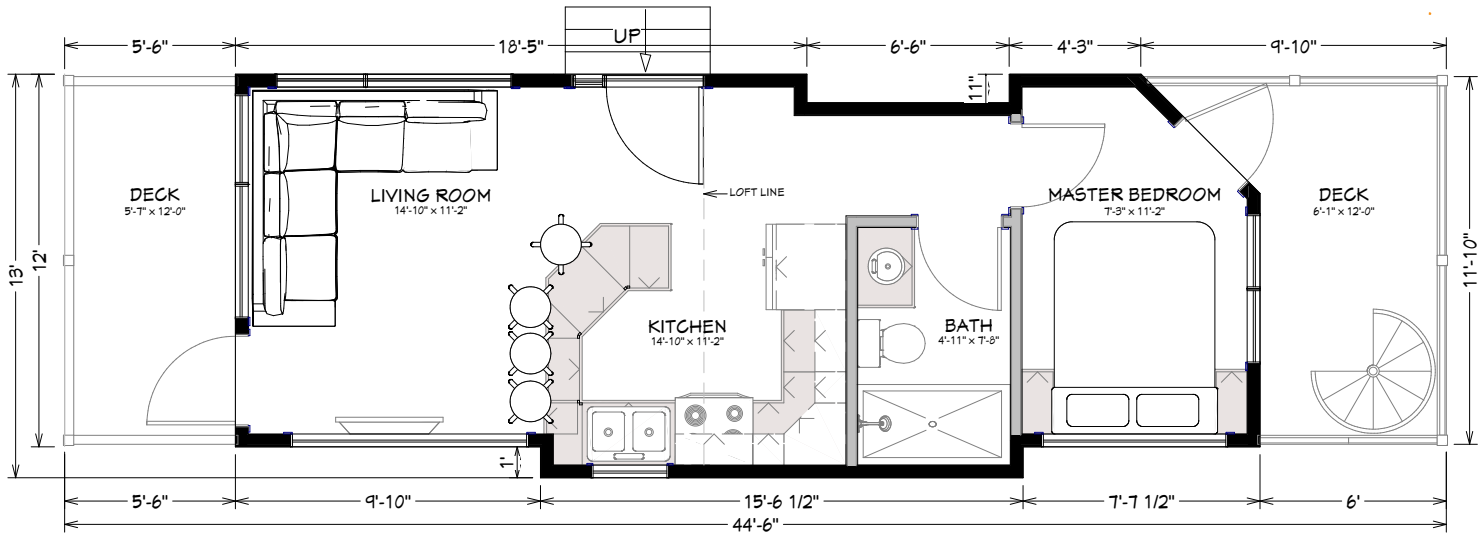
3123 S. Memorial Drive | Mt. Pleasant, WI 53403 | 101 Parr Avenue | Spicewood, TX 78669
P: 414 . 762 . 0950 | F: 414 . 762 . 0955
sales@utopian-villas.com | utopian-villas.com



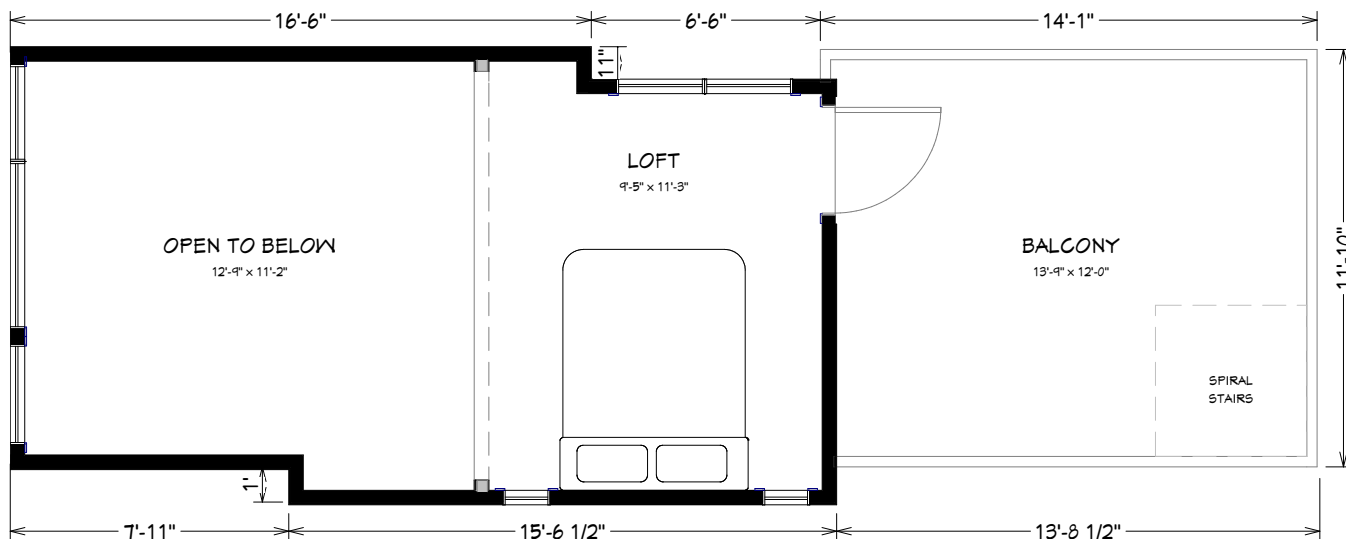
Rev. 01-22

The Denali Floor Plan

Main Floor



Loft Floor



Utopian Villas reserves the right to make changes to the floorplans, specifications, dimensions and elevations without prior notice