

The Homestead

a luxurious recreational retreat

Fun Fact
Without access to timber or stone, the early prairie settlers had to build houses out of sod (densely packed prairie grass). If you were on a railroad line, timber was abundant.



Plans and elevations may contain options which are not standard on all models

The Homestead, inspired by Homestead National Monument, has the size and amenities to establish roots on your plot of land. With an overall width of 15'-3" and an open concept great room, the living space in this home is unprecedented. The Homestead even has a master bedroom designed to fit a king size bed. Utopian Villas is showcasing 3-styles for this unit: The Modern Farmhouse (shown above), Rustic, and Modern (shown on reverse). An 8-foot wide covered porch is perfect for outdoor seating, while the single wall kitchen ensures the most unencumbered space in the living room. Even the bathroom is oversized with extra counter space, which is unheard of in an RV Park Model. A full-width staircase takes you to the open concept loft overlooking the great room. You can optionally enclose this space to form 2-private bedrooms. With these 2-additional bedrooms, the Homestead can sleep 6 guests.

Unique Features

- 400 sq. ft. main floor, 120 sq. ft. of deck, 191 sq. ft. of loft, 711 sq. ft. total
- large master bedroom with king bed
- 13'-2" x 14'-5" Great Room
- master bath with extra counter space
- 3-closets in the master bedroom
- 8-foot wide front porch
- loft with option to convert to 2-bedrooms
- single wall kitchen with full-size appliances
- comfortable circulating heating and cooling
- much more...

Typical "UV" Construction Features

- patented #6018921 insulated floor system
- 2x4 exterior wall construction with ZIP system sheathing
- closed cell spray foam in floor, walls, and ceilings
- factory prefinished siding
- Pella windows and doors
- drywall walls with wood accents
- Kohler plumbing products
- LED lighting
- Merillat cabinets
- quartz countertops
- Whirlpool appliances
- and more...



3123 S. Memorial Drive | Mt. Pleasant, WI 53403 | 101 Parr Avenue | Spicewood, TX 78669

P: 414 . 762 . 0950 | F: 414 . 762 . 0955

sales@utopian-villas.com | utopian-villas.com

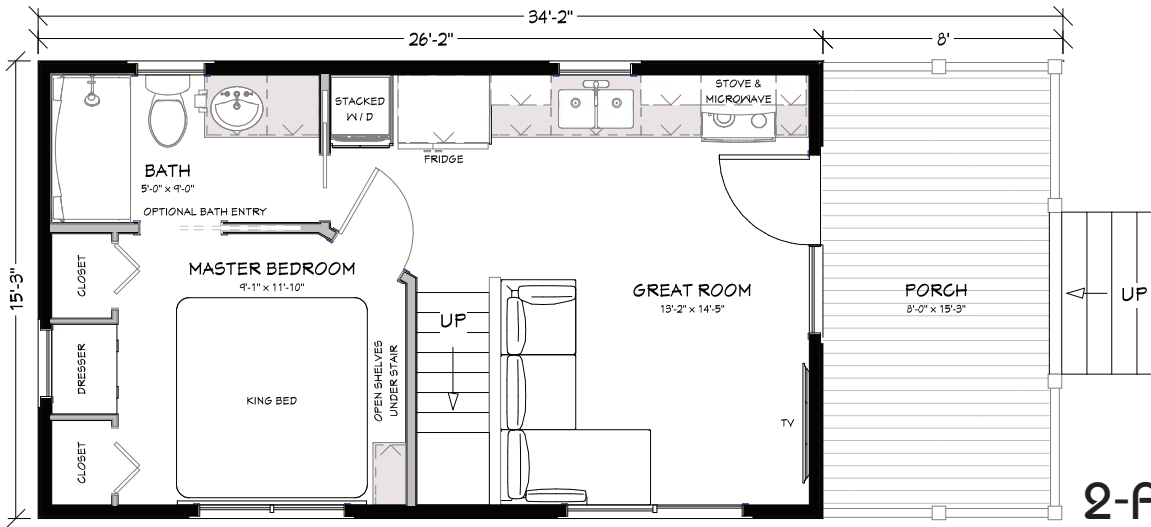


Rev. 3-20

The Homestead Floor Plan

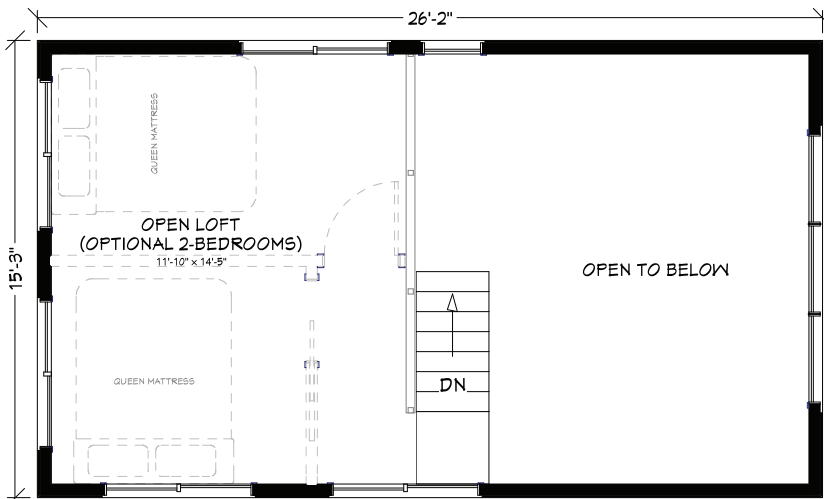


Main Floor



2-Additional Styles:

Loft



RUSTIC



MODERN

Utopian Villas reserves the right to make changes to the floorplans, specifications, dimensions and elevations without prior notice

3123 S. Memorial Drive | Mt. Pleasant, WI 53403 | 101 Parr Avenue | Spicewood, TX 78669

P: 414 . 762 . 0950 | F: 414 . 762 . 0955

sales@utopian-villas.com | utopian-villas.com



Rev. 3-20