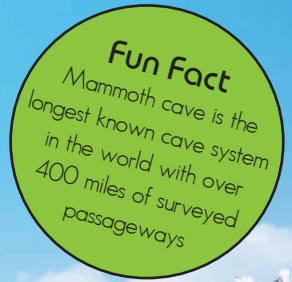


# The Mammoth

a luxurious recreational retreat



Plans and elevations may contain options which are not standard on all models

The Mammoth (ma-muhth), named after Mammoth Cave National Park, features interior gathering spaces tucked away under protective roof overhangs. This home features 3-queen beds and 2-bunk beds, potentially sleeping a total of 8-guests. If you do not need the extra 2-bunk beds, you can use this flex space as a desk to work remotely and be inspired by nature. A long covered walkway allows you to enter the house under cover from the rain and snow. The double sided fireplace is a prominent feature, creating both an indoor and outdoor living room. The living room with its grand panoramic view, will leave you breathless. When it comes to space, the kitchen's additional island seating will accomodate your family and friends comfortably. Whether your slice of paradise is a ski resort, a lake, or a forest, the Mammoth will be the focal point of years of memories to come.

## Unique Features

- 400 sq. ft. main floor, 230 sq. ft. of deck, 217 sq. ft. of loft, 847 sq. ft. total
- grand panoramic view from living room
- wrap around deck / outdoor living
- covered walkway
- master bedroom with wardrobe closet
- full-size bath with shower
- two loft bedrooms with queen beds
- horseshoe style kitchen
- grand stairway to loft
- much more...

## Typical "UV" Construction Features

- patented #6018921 insulated floor system
- 2x4 exterior wall construction with ZIP system sheathing
- closed cell spray foam in floor, walls, and ceilings
- factory prefinished siding
- Pella windows and doors
- drywall walls with wood accents
- Kohler plumbing products
- LED lighting
- Merillat cabinets
- quartz countertops
- Whirlpool appliances
- and more...



3123 S. Memorial Drive | Mt. Pleasant, WI 53403 | 101 Parr Avenue | Spicewood, TX 78669

P: 414 . 762 . 0950 | F: 414 . 762 . 0955

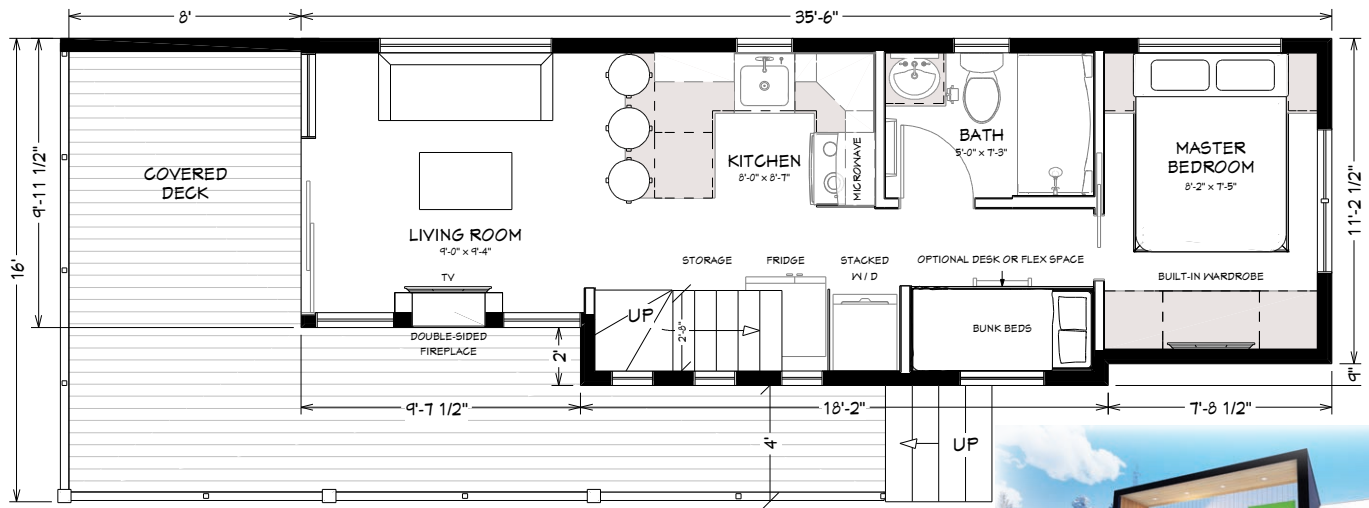
sales@utopian-villas.com | utopian-villas.com



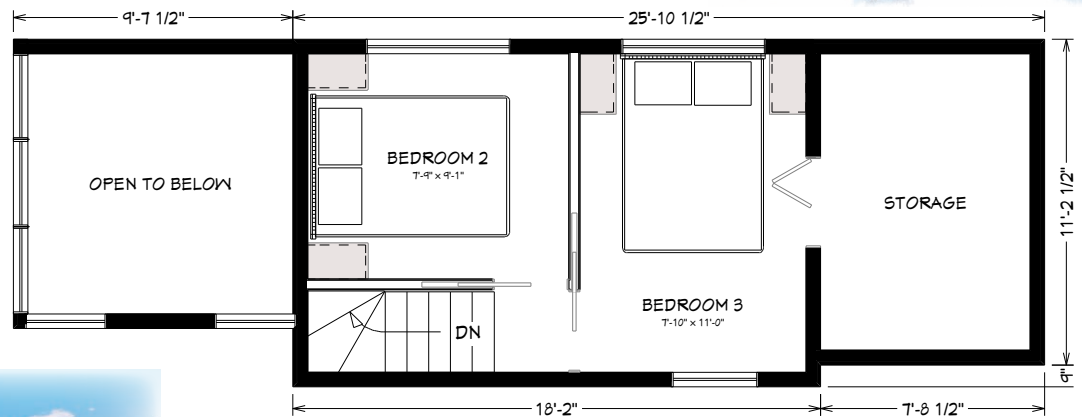
Rev. 2-20

# The Mammoth Floor Plan

## Main Floor



## Loft



Utopian Villas reserves the right to make changes to the floorplans, specifications, dimensions and elevations without prior notice

3123 S. Memorial Drive | Mt. Pleasant, WI 53403 | 101 Parr Avenue | Spicewood, TX 78669

P: 414 . 762 . 0950 | F: 414 . 762 . 0955

sales@utopian-villas.com | utopian-villas.com



Rev. 2-20