

The Biscayne

a luxurious recreational retreat

Fun Fact
95% of Biscayne National Park is underwater, with an average depth of 10 feet.

Plans and elevations may contain options which are not standard on all models

The Biscayne (bis-keyn), with its clear underwater views, defines this home design. Just as the shallow aqua blue waters of Biscayne National Park are a diver's paradise, this home is a destination with its panoramic views. With floor to ceiling glass and wrap around terraced stairs, the grandness of this home resembles a museum. The stairs spill out into the landscape with built in bench seating, creating an indoor / outdoor transition. The social value of this open concept gathering space is unprecedented and guests will be able to relax and have plenty of room to spread out. A 3-panel sliding glass door forms the entryway to the living room and kitchen. Behind this "glass box" is a private wing with 3 bedrooms and an oversized bathroom with a built-in shower bench. This premium home model would be best located on a waterfront or overlook, where the prime location justifies its iconic design amenities.

Unique Features

- 400 sq. ft. main floor, 272 sq. ft. of deck, 210 sq. ft. of loft, 882 sq. ft. total
- floor to ceiling glass to bring the outdoors in
- wrap around terraced stairs
- large covered deck and walkway
- master bedroom with closet
- full-size bath with built-in shower bench
- three bedrooms with queen beds
- horseshoe style kitchen
- comfortable circulating heating and cooling
- much more...

Typical "UV" Construction Features

- patented #6018921 insulated floor system
- 2x4 exterior wall construction with ZIP system sheathing
- closed cell spray foam in floor, walls, and ceilings
- factory prefinished siding
- Pella windows and doors
- drywall walls with wood accents
- Kohler plumbing products
- LED lighting
- Merillat cabinets
- quartz countertops
- Whirlpool appliances
- and more...



3123 S. Memorial Drive | Mt. Pleasant, WI 53403 | 101 Parr Avenue | Spicewood, TX 78669

P: 414 . 762 . 0950 | F: 414 . 762 . 0955

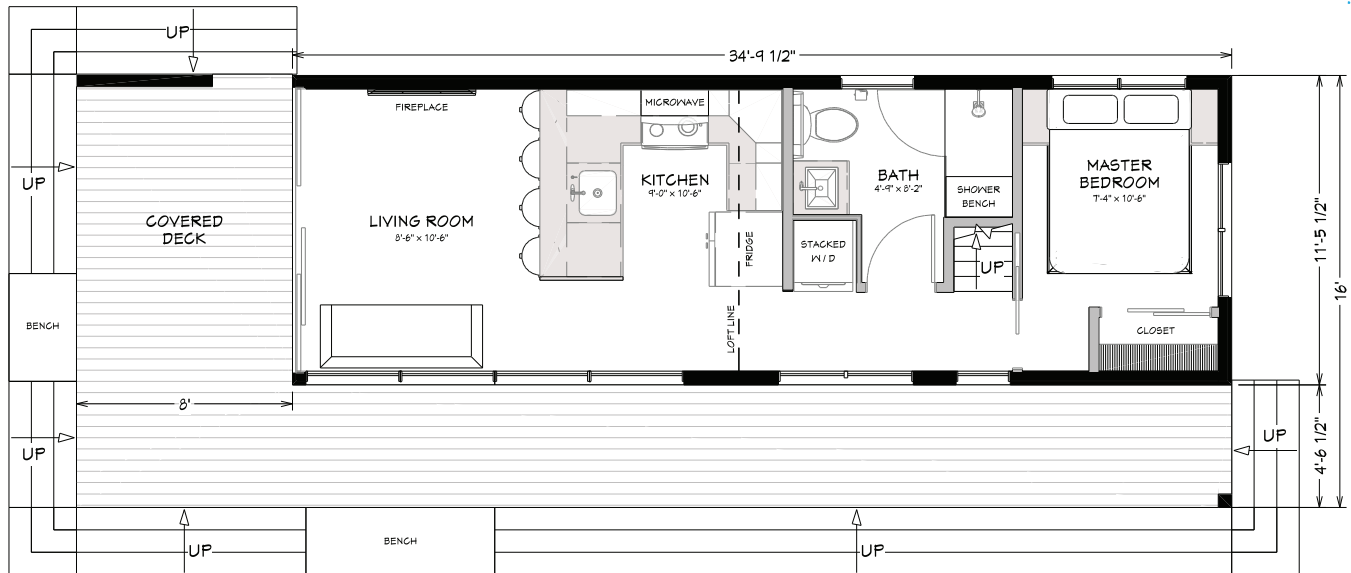
sales@utopian-villas.com | utopian-villas.com



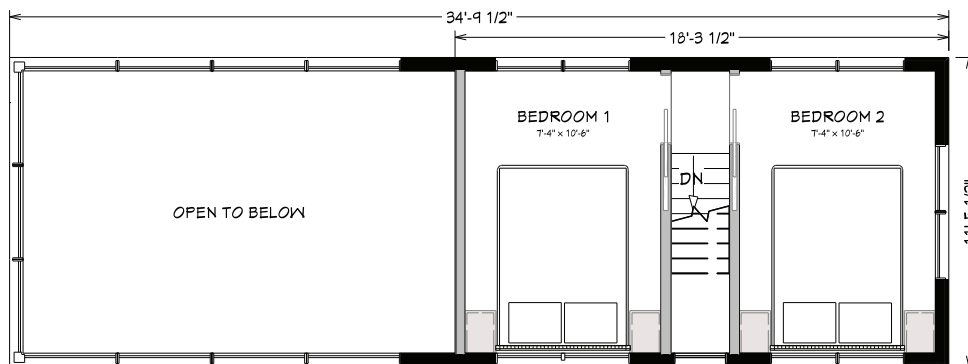
Rev. 2-20

The Biscayne Floor Plan

Main Floor



Loft



Utopian Villas reserves the right to make changes to the floorplans, specifications, dimensions and elevations without prior notice

3123 S. Memorial Drive | Mt. Pleasant, WI 53403 | 101 Parr Avenue | Spicewood, TX 78669

P: 414 . 762 . 0950 | F: 414 . 762 . 0955

sales@utopian-villas.com | utopian-villas.com



Rev. 2-20