

THE BOARDWALK



Plans and elevations may contain options which are not standard on all models

When we think Boardwalk, we think a walk constructed along a beach and that is why we call this the Boardwalk! This travel trailer is large enough yet petite enough to take to those remote locations. At 198 sq.ft. it's the perfect size for rest and relaxation. The exterior has that traditional look and features a nice bay detail to provide some fantastic panoramic views. Depending on your choice of exterior materials, textures and colors, this home can go from a beach house look to a clean contemporary farmhouse. Stepping through the large sliding glass door you are welcomed with tall vaulted ceilings, a magnificent desk space with those panoramic views, and a space to chill or even sleep if you desire. As you enter the kitchen, you see a nice array of cabinets and appliances to suit ones cooking needs. Don't think once you are in the kitchen you lose your views, nope you still get two great viewing angles. The bathroom is compact, yet provides you with the necessities and even storage for those bath products. The main sleeping area is in the loft which is accessed by a ladder. From the queen bed, you have the perfect vantage point to experience those starry nights from 2-skylights! Enjoy your travels, your quick vacations or make this your permanent home. Any way you choose, the Boardwalk will deliver!



TYPICAL "UV" CONSTRUCTION FEATURES

- Patented #6018921 insulated floor system
- 2x4 exterior wall construction with ZIP system sheathing
- Closed cell spray foam in walls, ceilings, and floor
- Pella windows and doors
- Kohler plumbing products
- Sea-Gull LED lighting
- Custom cabinets & built-ins
- Solid surface countertops
- And more...

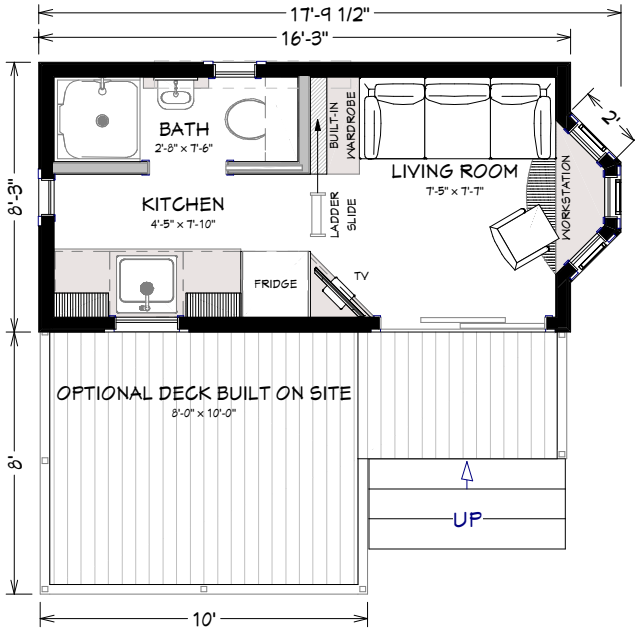


3123 S. Memorial Drive | Mt. Pleasant, WI 53403 | 101 Parr Avenue | Spicewood, TX 78669
 P: 414 . 762 . 0950 | F: 414 . 762 . 0955
 sales@utopian-villas.com | utopian-villas.com

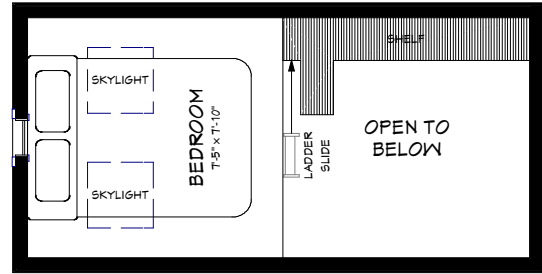


THE BOARDWALK

FIRST FLOOR



LOFT



Utopian Villas reserves the right to make changes to the floorplans, specifications, dimensions and elevations without prior notice