

The Olympic

a luxurious recreational retreat

Fun Fact
 Sequim, Washington, in the rainshadow of Mount Olympus, receives 16" of rain per year (similar to Los Angeles), while while Forks, WA (only 70 miles away) receives 120" of rain.



Plans and elevations may contain options which are not standard on all models

The Olympic (uh-lim-puhk), with its unique topography and distinct climate zones, defines this home design. Just as the cedar "tower" separates the home into two zones, Olympic National Park has lush temperate rainforests, glaciers, and a dry Mediterranean climate. The floor to ceiling glass in the living room will accentuate any landscape and give the space a grand feel, without compromising privacy. This great room with 9'-6" to 11'-6" high ceilings, has a full-sized kitchen with an island and a breakfast bar, perfect for entertaining. The great room transitions to a private sleeping wing with three bedrooms. The tower gives the facade an element of verticality, unique to Park Model homes. With a hidden staircase leading to a private sleeping loft, this home is perfect for the introvert and extrovert alike.

Unique Features

- 400 sq. ft. main floor, 148 sq. ft. of deck, 205 sq. ft. of loft, 753 sq. ft. total
- floor to ceiling glass to bring the outdoors in
- generously sized sleeping wing
- large covered deck and walkway
- master bedroom with closet
- full-size bath
- three bedrooms with queen beds
- horseshoe style kitchen
- comfortable circulating heating and cooling
- much more...

Typical "UV" Construction Features

- patented #6018921 insulated floor system
- 2x4 exterior wall construction with ZIP system sheathing
- closed cell spray foam in floor, walls, and ceilings
- factory prefinished siding
- Pella windows and doors
- drywall walls with wood accents
- Kohler plumbing products
- LED lighting
- Merillat cabinets
- quartz countertops
- Whirlpool appliances
- and more...

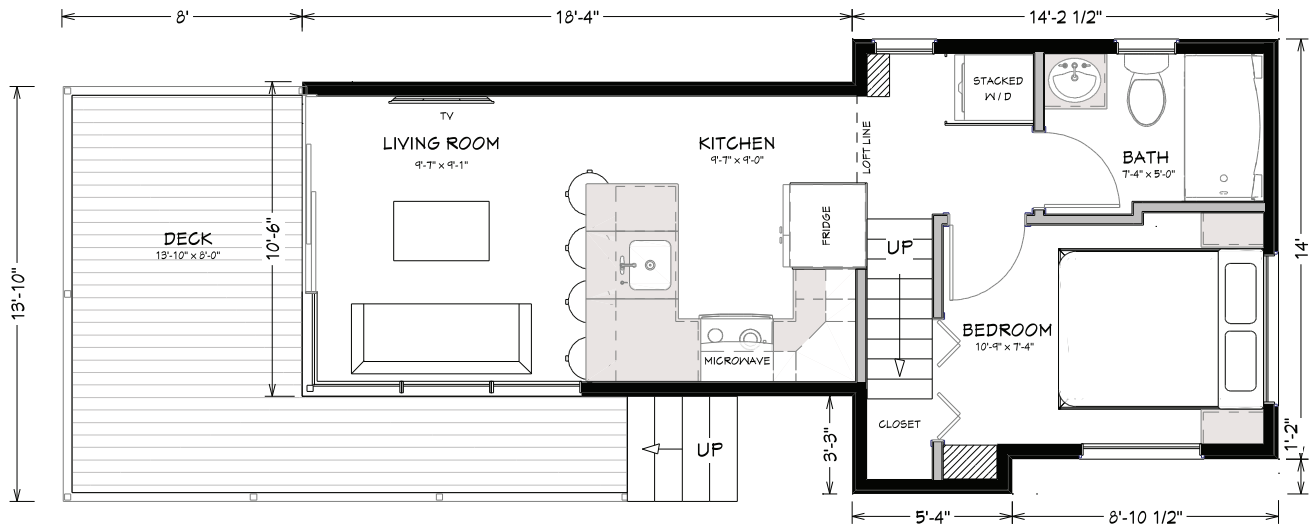


3123 S. Memorial Drive | Mt. Pleasant, WI 53403 | 101 Parr Avenue | Spicewood, TX 78669
 P: 414 . 762 . 0950 | F: 414 . 762 . 0955
 sales@utopian-villas.com | utopian-villas.com

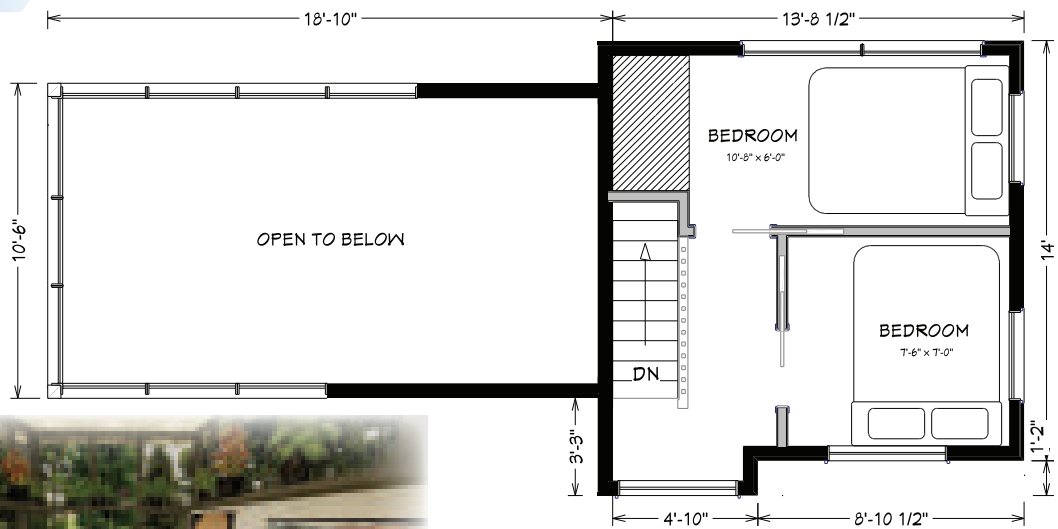


The Olympic Floor Plan

Main Floor



Loft



Utopian Villas reserves the right to make changes to the floorplans, specifications, dimensions and elevations without prior notice

3123 S. Memorial Drive | Mt. Pleasant, WI 53403 | 101 Parr Avenue | Spicewood, TX 78669

P: 414 . 762 . 0950 | F: 414 . 762 . 0955

sales@utopian-villas.com | utopian-villas.com



Rev. 2-20